

LD43, LD43W & LD43A

Miniature recessed LED uplight



Data sheet - Page 1

Project: Private Residence
Design: Brilliant Lighting

The LD43 packs a lot of features into a very compact fitting. It based on the LD42 wall light, with a flush glass and walkover bezel. This enables the same look for both wall and floor washing. With its very minimal depth and small cables, it is best suited for interior applications, including bathrooms.

Key Features

- Uplighter version of our LD42 wall light
- Compact size with excellent power
- Soft contoured beams from a range of optics
- Very minimal depth
- Recessed LED position for reduced glare
- LD43W has an integral glare shield
- LD43A has an integral glare shield and 20° tilt film to angle the light towards the lit surface and further reduce glare
- Hard anodised body with stainless steel 316 bezel
- Hidden fixing options include spring clips or O-rings and a first fix sleeve
- Available with Switch, 0-10V, DMX, Dali or Mains dimmable drivers

Please note: For exterior in-ground applications please use the LD41, LD60, LD43DR, LD56 or LD56T. These have an integral anti wicking barrier as well as having thicker cable which is more suitable for exterior in-ground installations.

Specification

Applications				
Beam Angles	12°, 31°, 48°, 36° x 12°			
LED type	1 x Cree XPG2			
Colour temperature	2700K* / 3000K		5000K	
Drive Current (mA)	350	500	350	500
LED power** (W)	1.2W	1.7W	1.2W	1.7W
CRI (typical)	93	93	75	75
Forward voltage (V) ₁₀₀	3.0V	3.2V	3.0V	3.2V
Delivered lumens (L ₁₀₀)***	88	120	107	146
Lumens per circuit watt	73	71	89	86
LED lifetime (to 70% lumen maintenance)	50,000hrs at a max ambient temperature of 35°C (if specifying fitting in ambient temperatures of up to 45°C run at 350mA max, LD43-350)			
Materials	Hard anodised aluminium body with machined stainless steel bezel			
Glass	3.3mm thick borosilicate			
Wiring	Comes pre-wired with 2 core 100mm lead, can be specified with up to 10m at extra cost			
IP rating	IP66			
	*2700K lumen output is 12% lower than the 3000K figure listed			
	4000K lumen output is 14% higher than the 3000K figure listed (80 CRI)			
	**LED wattage includes losses associated with using an 85% efficient driver			
	***LD43A and LD43W lumen output will be 40% less due to the glare shield			

LD43



LD43W, LD43A



LD43, LD43W & LD43A



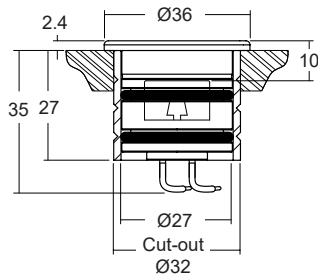
Miniature Recessed LED Uplight

Data sheet - Page 2

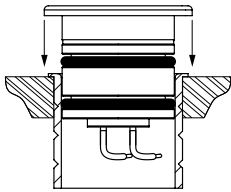
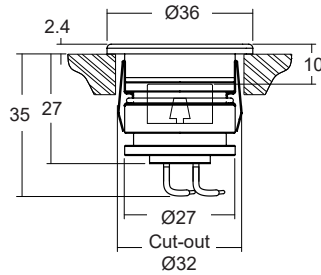
Dimensions and fixing options

/480 - O-rings and sleeve

A more robust and water-tight method of fixing, for in ground applications

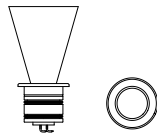


/SC - Spring clip fixing



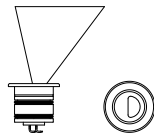
Body Options

LD43



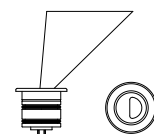
Lens and LED assembly are recessed into the body by 10mm.

LD43W



Body has a machined half moon in front of the lens to reduce glare. Please note that the oval lens can not be used in this or the LD43A.

LD43A



Same as the LD43W but with an integral 20° refractor film which angles the light towards the surface to be lit.

Photometrics

Photometric files are included in the design pack which can be downloaded from the LD43, LD43W & LD43A product page on the website.

Order Codes and Options

Product code	LED colour	Lens angle	Finish	Fixing
LD43 - 350 - 500				

Example: LD43A-500 / LW30 / MB / Stainless steel / 480

Product codes with output options

350mA 1.2W	LD43-350 LD43W-350 LD43A-350	500mA 1.7W	LD43-500 LD43W-500 LD43A-500
------------	------------------------------------	------------	------------------------------------

LED colour options

LED colour options	Suffix
Extra warm white (2700K)	/LW27
Warm white (3000K)	/LW30
White (4000K) - on request	/LW40
Cool white (5000K)	/LW50
Blue	/LB
Green	/LG
Red	/LR
Amber	/LA

Beam / lens angle options

12° narrow spot	/NB
31° medium	/MB
48° wide	/WB
36° x 12° oval (only available on the LD43)	/OB

Bezel finish options

Stainless steel 316 (standard)
 Paint finish white / black / RAL
 Polished and passivated stainless steel (for marine environments)
 Antique bronze (flamed solid bronze)

Fixing options

First fix sleeve and O-rings (recommended)	/480
Spring clips	/SC

Use with 350mA and 500mA constant current LED drivers

We have a wide range of dimmable LED drivers, 1-10V, DMX, DALI and Mains dimmable. Please see the downloads section on our website:
 To run 1-14 LD43-350 in series use a TXDEL350D (0-10V dimmable)
 To run 1-14 LD43-500 in series use a TXDEL500D (0-10V dimmable)